

Programmable Output Modules

PGM82

8-PGM Expansion Module

Description

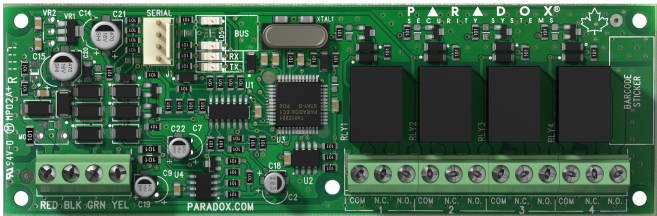
The PGM82 Programmable Output Expansion Module includes eight / four programmable relay outputs. Compatible with all Paradox control panels. Outputs can be activated using the Insite GOLD mobile application, integrated manual switches or programmed to follow system events. Each output can drive 4A/ 24V loads.

The PGM82 includes a Status LED indication for each PGM as well as power and panel data exchange.

The PGM82 comes with its own ABS box that is easy to install. Integrated locking mechanism included; can be replaced with metal lock if desired.

Features

- Expansion of 8 programmable outputs
- PGM control via Insite GOLD application
- PGM control with manual on-box switches
- Can follow system events
- Display for each PGM, Data and Power
- Box cover lock mechanism
- Supports SP, MG, EVO and Swan
- Connects to control panel via 4-wire on keypad bus
- Firmware upgradeable



Specifications

Input Voltage	11 to 16 Vdc
Current Consumption	315 mA max (all PGMs activated)
Number of outputs	8 Form 'C' relays
Output	24V, 4A any load
Maximum module current	15A total per module
Operating temperature	-20° C to +50° C (-4° F to 122° F)
Humidity	95% maximum
Dimensions (H x W x D)	PCB: 16.5 cm x 10.2 cm x 2.5 cm (6.5 in x 4 in x 1 in)
Compatibility	EVO192, EVOHD, MG5000, MG5050, SP5500, SP6000, and SP7000 V6.80 and higher

