

Programmable Output Modules

PGM4

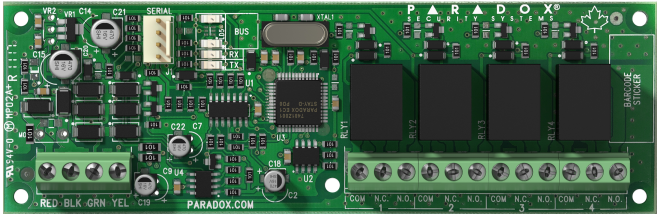
4-PGM Expansion Module

Description

The PGM4 Programmable Output Expansion Module includes eight / four programmable relay outputs. Compatible with all Paradox control panels. Outputs can be activated using the Insite GOLD mobile application, integrated manual switches or programmed to follow system events. Each output can drive 4A/ 24V loads.

Features

- 4 fully programmable 5A relay outputs
- Deactivate PGM after event and/or timer
- Pulse PGM output for fire alarms
- In-field firmware upgradeable
- Compatible with MG6250, MG5000 and MG5050 V3.00, MG5075, Spectra SP series V3.00, and EVO Series
- EN50131 grade 3



Specifications

Input Voltage	11 to 16 Vdc
Current Consumption	150 mA max (all PGMs activated)
Number of outputs	4 Form 'C' relays
Output	24V, 4A any load
Maximum module current	12A total per module
Operating temperature	-20° C to +50° C (-4° F to 122° F)
Humidity	95% maximum
Dimensions (H x W x D)	PCB: 14 cm x 4.5 cm x 3 cm (5.5 in x 1.8 in x 1.2 in.)
Compatibility	All panels

